



GREEK ISLAND HOPPING!



- Sail in Greece was established in 2015, and initially started with chartering 3rd party cruises.
- We are a team of specialists that love to travel and we specialize in gulet cruises and adventures around Greece and its Islands.
- We love making our fellow travelers feel welcome on any cruise, they choose to join.
- Our company coordinates and offers cabin cruises in the wider region of the Saronic, the Cyclades and the Ionian Sea, with our Corfu, Zante and Mykonos cruise, just to name a few.
- Our active base ports are in Athens, Chalkida, Corfu, Lefkada and Zante.

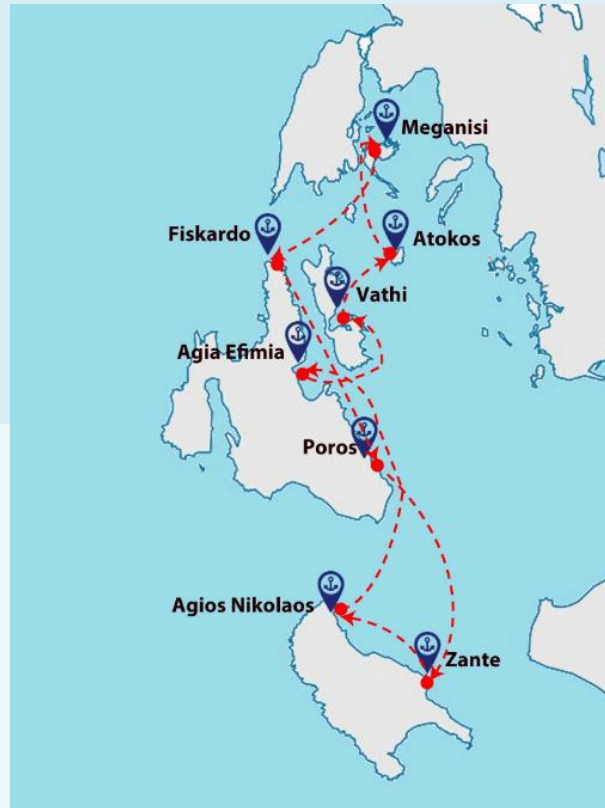
ABOUT US



Corfu Cruise



Zante Cruise



Saronic Cruise



Ionian Cruise

Sightseeing & Relaxation

Embark on a captivating voyage through the azure waters of the Ionian Sea and experience the epitome of island paradise on our Corfu cruise.

Setting sail from the picturesque Corfu Island, this 7-day escapade promises an unforgettable journey filled with breathtaking landscapes, crystal clear waters, and cultural wonders.



Ionian Cruise

- 7-day night accommodation on board
- The crew (Captain, Engineer, Stewards, Chef)
- The fuel consumption (4hrs/day)
- Half Board (Buffet)
- Welcome & Captain's dinner
- Private beach & swim stops
- SUP & Kayak
- Snorkeling equipment
- Basic toiletries
- Wi-Fi (subject to limitation)
- A/C (subject to limitation)



Embarkations are on Saturdays, from May to October

DAY 1
Kassiopi

DAY 2
Sivota

DAY 3
Parga

DAY 4
Antipaxos

DAY 5
Gaios

DAY 6
Lakka

DAY 7
Corfu

DAY 8
Departure

Corfu's Itinerary Notes

The itinerary may need to change due to inclement weather circumstances, difficulties at docking, or more general unforeseen circumstances.

This decision will be made solely at the operating captain's discretion and judgment, based on the safety of the passengers, crew and vessel itself.



Corfu's Old Port

Departure day
Saturdays (May - October)

Meeting point
Corfu's Old Port

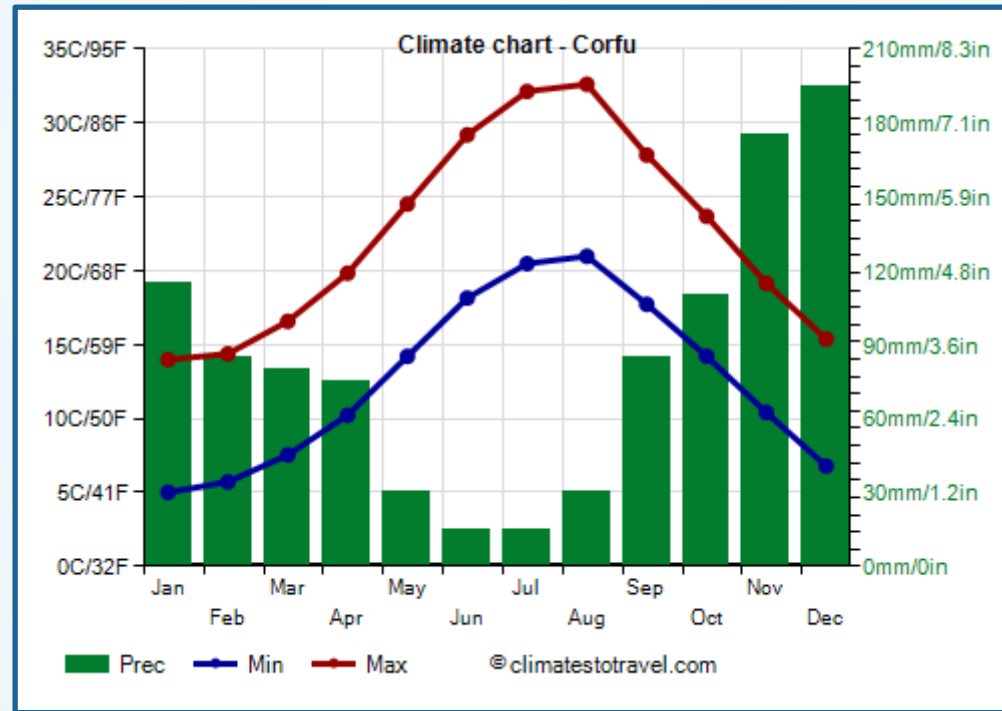
Check-in
16:00

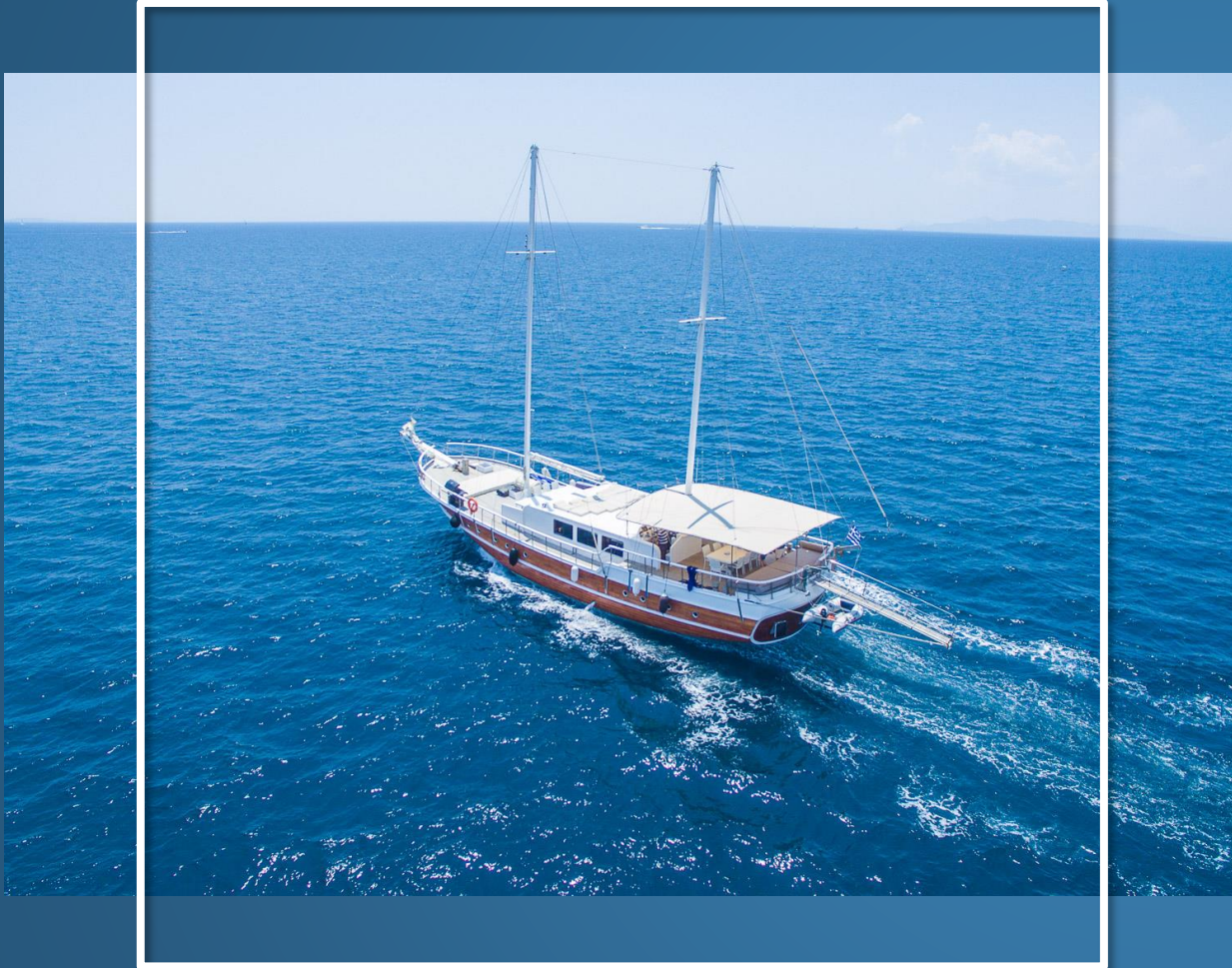
Embarkation
17:00

Check-out
09:00

*In case of late arrivals, the vessel will stay docked and embark for its scheduled embarkation, only after every supposed passenger, is on board

Corfu's Average Temperature





Zante Cruise

Sightseeing & Relaxation

Discover the postcard-worthy beauty of Zante and its unique Island complex, as you hop from one island gem to another, each offering its unique allure.

Dive into crystal-clear waters and explore stunning sea caves.

Relax on golden sandy beaches, soaking up the Mediterranean sun!



Zante Cruise

- 7-day night accommodation on board
- The crew (Captain, Engineer, Stewards, Chef)
- The fuel consumption (4hrs/day)
- Half Board (Buffet)
- Welcome & Captain's dinner
- Private beach & swim stops
- SUP & Kayak
- Snorkeling equipment
- Basic toiletries
- Wi-Fi (subject to limitation)
- A/C (subject to limitation)

Embarkations are on Saturdays, from May to October

DAY 1
Ag.
Nikolaos

DAY 2
Ag. Efimia

DAY 3
Vathi

DAY 4
Atokos -
Meganissi

DAY 5
Fiskardo

DAY 6
Poros

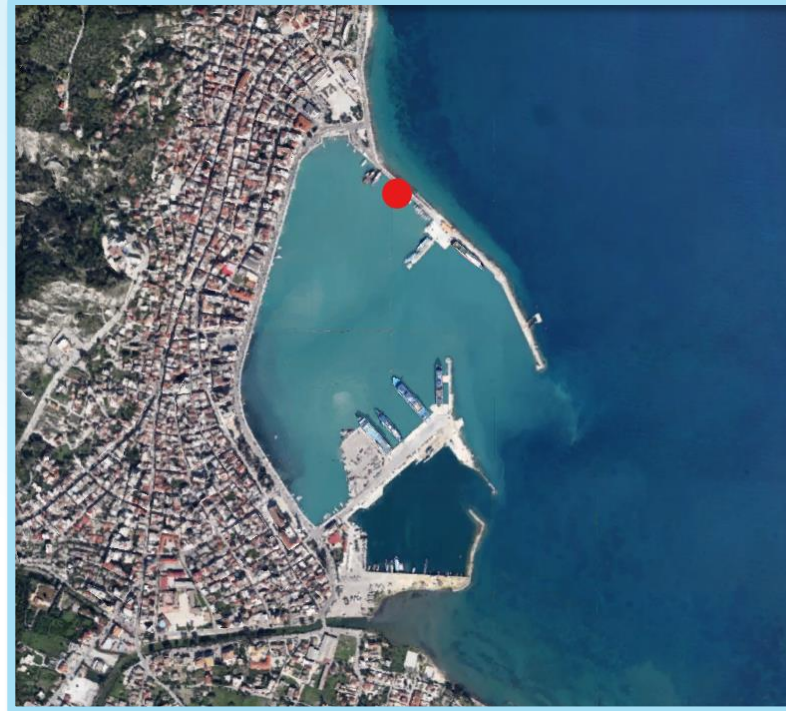
DAY 7
Zante

DAY 8
Departure

Zante's Itinerary Notes

The itinerary may need to change due to inclement weather circumstances, difficulties at docking, or more general unforeseen circumstances.

This decision will be made solely at the operating captain's discretion and judgment, based on the safety of the passengers, crew and vessel itself.



Zante's main port

Departure day
Saturdays (May - October)

Meeting point
Zante's Port

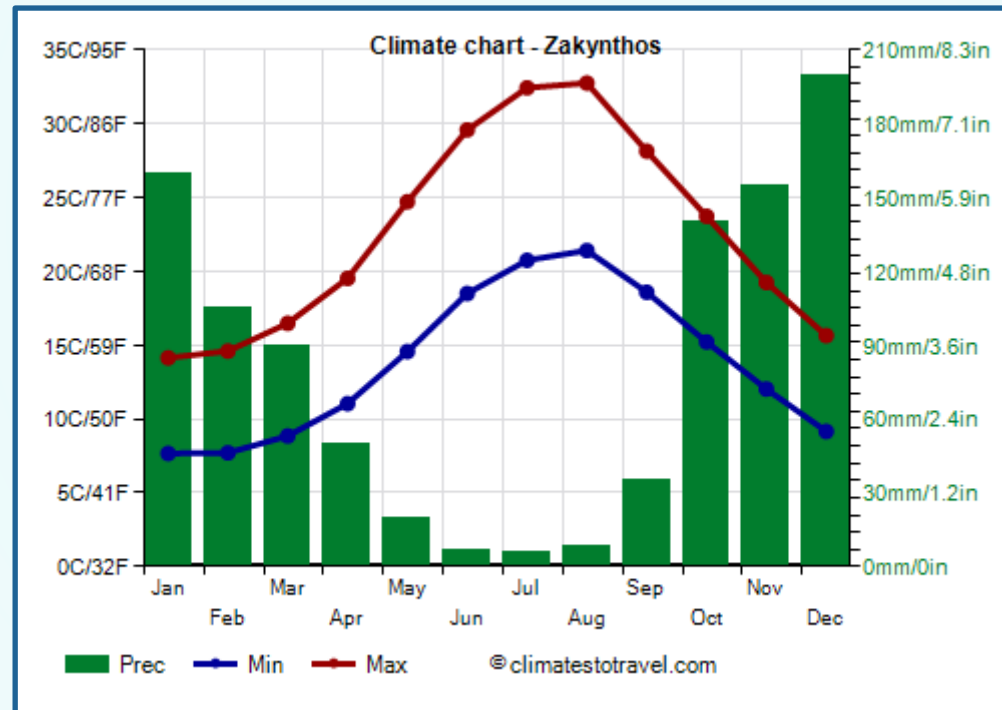
Check-in
16:00

Embarkation
17:00

Check-out
09:00

*In case of late arrivals, the vessel will stay docked and embark for its scheduled embarkation, only after every supposed passenger, is on board

Zante's Average Temperature





Cabin cruises include

- 7-day night accommodation on board
- The crew (Captain, Engineer, Stewards, Chef)
 - The fuel consumption (4hrs/day)
 - Half Board (Buffet)
 - Welcome & Captain's dinner
 - Private beach & swim stops
 - SUP & Kayak
 - Snorkeling equipment
 - Basic toiletries
 - Wi-Fi (subject to limitation)
 - A/C (subject to limitation)

Cabin cruises do not include

- Flight tickets
- Accommodation pre/post cruise
 - Travel Insurance
 - Dinners
 - Drinks/Drink packs
- Local transportation pre/post cruise
- Optional excursions/activities
 - Port fees

Onboard Menu

MEAL-BASIS

All our standard cruise options include a Half Board basis, which means that we offer daily breakfast and lunch, in a buffet style.

MEAL-TIMES

Breakfast, lunch and dinner times are going to be discussed on a daily basis, with the operating captain and the chef, based on the day-to-day schedule of the cruise.

SPECIAL DIETARY REQUIREMENTS

We respect each of our passenger's dietary requirements and we prepare meals accordingly.



Daily Breakfast Items



Breakfast Items

- Bread
- Butter
- Greek wild honey
- Peach jam
- Marmelade jam
- Cheese plate
- Eggs
- Tomatos
- Cucumbers
- Fruits
- Greek yogurt
- Cereal
- Cake
- Milk
- Coffee
- Tea

Daily lunch schedule



Sail in Greece ADVENTURES SmashReality						
Day 1 - Dinner	Day 2 - Lunch	Day 3 - Lunch	Day 4 - Lunch	Day 5 - Lunch	Day 6 - Lunch	Day 7 - Lunch
<ul style="list-style-type: none"> • Spaghetti bolognese / Napolitana • Cheese pie • Spring rolls • Greek Salad • Fresh Bread • Dessert 	<ul style="list-style-type: none"> • Greek Pork Souvlaki • Greek Chicken Souvlaki • Sausage w/ Greek Tzatziki • Fresh French fries • Greek Salad • Zucchini with Feta • Spinach pie • Pita Bread • Fresh Fruits 	<ul style="list-style-type: none"> • Greek Lamb w/ potatoes in the oven • Cheese pie • Risoto Milanese • Cabbage Salad • Coleslaw Salad • Plate w/ Cheeses • Fresh Bread • Dessert 	<ul style="list-style-type: none"> • Fried Fish w/ brown rice • Pennes al Tuna • Eggplant w/ green Peppers • Tuna Salad • Green Salad • Fresh Fruits • Pita Bread 	<ul style="list-style-type: none"> • Local Beef (oven/fried) w/ rice and carrots • Mashed potatoes • Broccoli and sweet Corn • Vegetables mixed sauce • Fresh Fruits • Fresh Bread 	<ul style="list-style-type: none"> • Chicken Crispy w/ roasted potatoes • Rice w/ Mushrooms • Greek Tzatziki • Greek Salad w/ olives • Plate w/ Cheeses • Fresh Bread • Dessert 	<ul style="list-style-type: none"> • Lamp Chops w/ mashed potatoes • Greek Mousaka • Grilled vegies • Cheese pie • Spinach pie • Green Salad • Fresh Fruits • Pita Bread
Captain's Dinner menu						
			<ul style="list-style-type: none"> • Grilled Octopus / Shrimp and local Fish • Fried Kalamari w/ lemon • Greek quality Rice • Spring rolls • Fried Zucchini • Fresh French fries • Tomato Salad w/ Basilico sauce • Cabbage Salad • Dessert / Fresh Fruits • Fresh Bread / Pita Bread • One Glass of Quality Greek Wine (Red/White) 			

Operational Info

- All cabin lights, showers and toilets, on board, work at 24V. The vessels are equipped with batteries, that supply an output of 24V, hence there is no need for external power supply for your lights, showers and toilets to operate.
- Wi-Fi works only when we have a power supply connected to the ports, as well as when the generator is working.
- The A/C operates 4 to 6 hours, per day (if it is permitted by government's Covid regulations). The A/C also works only when the generator is working but due to local regulations, the generator is turned off at midnight. The power supply from the shore at the Ports of Zante, Agios Nikolaos, Poros, Agia Efimia and Fiskardo (due to weak infrastructure) is not powerful enough to operate our A/C units. Please keep in mind that there are hot nights, especially during July/August, when the A/C does not work after midnight.
- You are able to have a shower any time of the day but keep in mind that when the boat is docked at Zante and Fiskardo port and the engines are turned off, the flow is reduced and there is not hot water after midnight. If your shower does not have hot water, please inform your Captain in order to open the water heater and please wait for 15/20 minutes until it heats up, the water again. Water tanks on a boat are limited, meaning, when multiple cabins shower at the same time, hot water is more likely to end.
- Daily cleaning includes general cleaning and the change of any toilet bins. Keep in mind, that cleaning, does not include making the beds. We change sheets and linens on day ONE and one more time during the cruise. If you need extra towels or sheets, please refer to your dedicated steward on board directly and would be happy to assist.



Standard Procedures

- Check-in time for all cruise departures is at 16:00, while the actual embarkation is at 17:00.
- Our late arrival policy, prevents the vessel from embarking until each and every supposed passenger is on board.
- Cruising activities are prohibited, if winds are over 6 Bft.
- Itineraries are completely on the Captain's judgement, thus all itineraries are subject to change.
- Bringing Drinks and Food on board, is not allowed.
- All cabins are equipped with European type sockets, adaptors may be required.

Activities Excursions

LAND AND EXCURSIONS/ACTIVITIES

Land excursions and activities are not included in any cabin-cruise option, but are available as optional. Excursion availability is subject to the cruise's schedule and circumstances.

EXCURSIONS

- Guided tours
- Wine tastings
- Cooking classes
- Horse ridings
- Hikes
- Cultural walking tours
- Water sports

Please note that all the above excursions are subject to availability



Our Fleet



Our Fleet

- Sail in Greece now operates with 9 vessels
 - Our fleet consists of traditional wooden handmade gulets, which majority can accommodate up to 25 guests.
 - Our active base ports are in Athens, Chalkida, Corfu, Lefkada and Zante.





M/S Artemis

Cabins	16
Cabin Types	Ensuite
Guests	49
Length	33m
Year of Built	1998

Artemis, the biggest vessel in our fleet, is 33m long and can accommodate large-sized groups, up to 49 people.

The cabin allocation consists of 8 Twins (Bunk beds), 6 Quads (Bunk beds) and two triples, which consist of 1 bunk bed and 1 single bed.

All cabins are ensuite, with their own individual bathroom, hairdryer, reading lights and A/C device.

M/S Aphrodite

Cabins	8
Cabin Types	Ensuite
Guests	20
Length	25m
Year of Built	2017



Aphrodite is 26m long and can accommodate up to 20 people, including our onboard crew.

It is ideal for small-group Island hopping.

The cabin allocation consists of 1 Master Double, and 6 Standard Triples, which consist of 1 Standard Double and 1 single.

All cabins are ensuite, with their own individual bathroom, hairdryer, reading lights and A/C device.



M/S Hemera

Cabins	9
Cabin Types	Ensuite
Guests	18
Length	28m
Year of Built	1996



With its spacious interior and exterior, Hemera is the epitome of comfort-cruising.

It is 28m in length and can accommodate up to 18 people, in its 9 cabins.

Hemera's cabin allocation consists of 9 Standard Doubles, which all ensuite, and include their own individual bathroom, hairdryer, reading lights and A/C device.



M/S Harmonia

Cabins	7
Cabin Types	Ensuite
Guests	16
Length	25m
Year of Built	2010

Harmonia, one of our newest adaptations, is ideal for small group-sized Island hopping cruises, with up to 16 attendees.

Harmonia has 7 cabins, and its actual cabin allocation consists of 5 Standard Doubles and 2 Triple Standard. (1 Double and 1 Single Standard)

All cabins are ensuite, with their own individual bathroom, hairdryer, reading lights and A/C device.



M/S Eros

Cabins	11
Cabin Types	Ensuite
Guests	25
Length	30m
Year of Built	2008

Hera is one of the larger gulets in our fleet, in regards to dimensions and cabin measurements.

As it can accommodate up to 25 people, the cabin allocation consists of 9 Standard Doubles, and 2 triples, which consist of 1 Double + 1 single.

All cabins are ensuite, with their own individual bathroom, hairdryer, reading lights, and A/C device.



M/S Hera

Cabins	9
Cabin Types	Ensuite
Guests	25
Length	28m
Year of Built	1993

Hera is ideal for small groups up to 25 people. The cabin allocation consists of 1 Master Double, 6 Standard Doubles and 2 triples.

All cabins are ensuite, with their own individual bathroom, hairdryer, reading lights and A/C device.

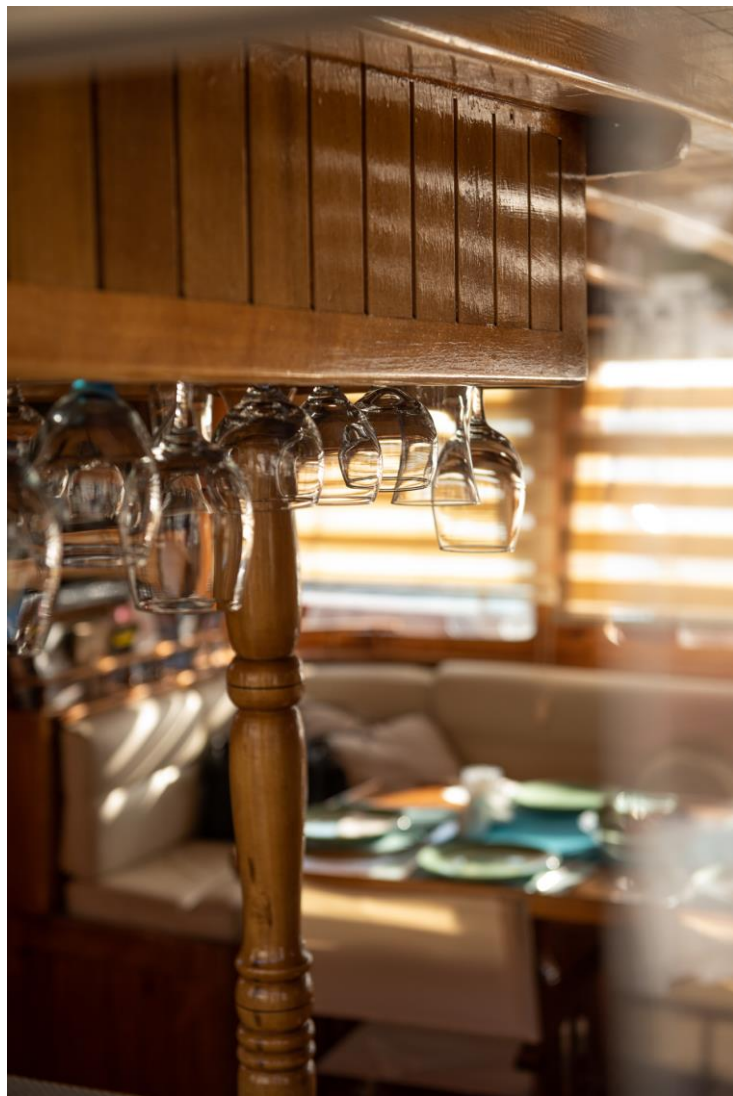
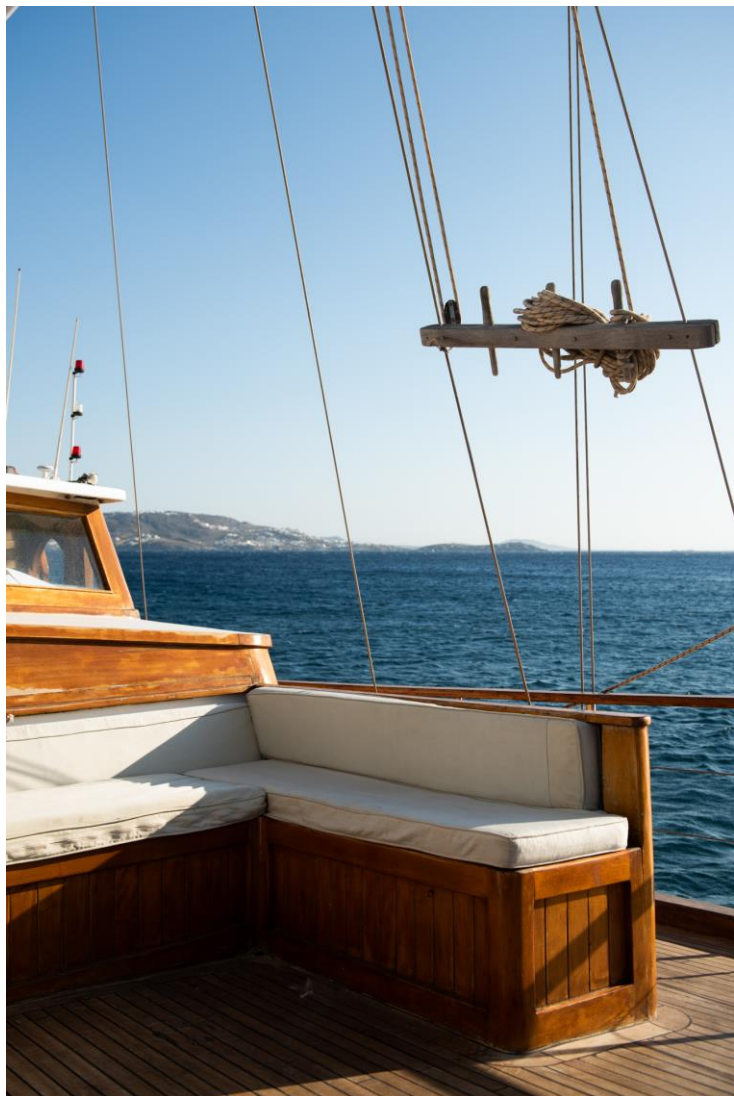




Further Information

- Smoking is not permitted, in any of the interior spaces.
- Tipping is not required. It's at the passenger's discretion.
- Attendees must have a valid passport with them, and should obtain a visa & health certificate, in case it's required.
- A/C operates up to 8 hours per day, during the time the generator is operating. Overnight A/C is optional.







UNITED KINGDOM

International House
24 Holborn Viaduct
London, EC1A 2BN
+44 203 239 9253
info@sail-ingreece.com

GREECE

Thrakis & Rizountos 16A
Elliniko, Athens
+30 211 215 2595
info@sail-ingreece.com

UK Representation
by **Doubleeye**
info@doubleeye.com



DOUBLEAYE



Thank you and ...



... see you on board soon!